



hopelink

transforming lives

CAMPAIGN

for **lasting change**



During its long history, Hopelink has introduced effective programs and services that have changed the lives of more than 1,000,000 people in need throughout north and east King County.

Through this capital campaign, Hopelink will expand its ability to transform lives and, with your support, we will move one step closer to ensuring self-sufficiency and lasting change for everyone. — LAUREN THOMAS, HOPELINK CEO



Hopelink will significantly expand its support to those in need through a campaign to raise \$25 million. A successful capital campaign will enable growth in services that have proven to help people meet their basic needs and gain self-sufficiency. With your help, we will address the growing demand for access to specialized support and services throughout north and east King County.

The Campaign for Lasting Change will enable us to:

Double the number of case managers and employment specialists to meet the needs of the 10,000 people who require skills and tools in order to become self-sufficient.

Build new integrated service centers in Redmond and Shoreline.

Renovate a dilapidated 9-unit building, creating 11 units of housing for homeless families.

Expand the availability of healthy and nutritious food to the 86,000 low-income individuals living in our community.

Build 8 units of new housing for families.

There's a perception that we live in a very prosperous area of King County, but I can tell you first hand there's a large invisible population of people that need our help. —LINDA TAPPAN, HOPELINK CASE MANAGER

86,000

people in our community live in poverty

Why Here, Why Now?

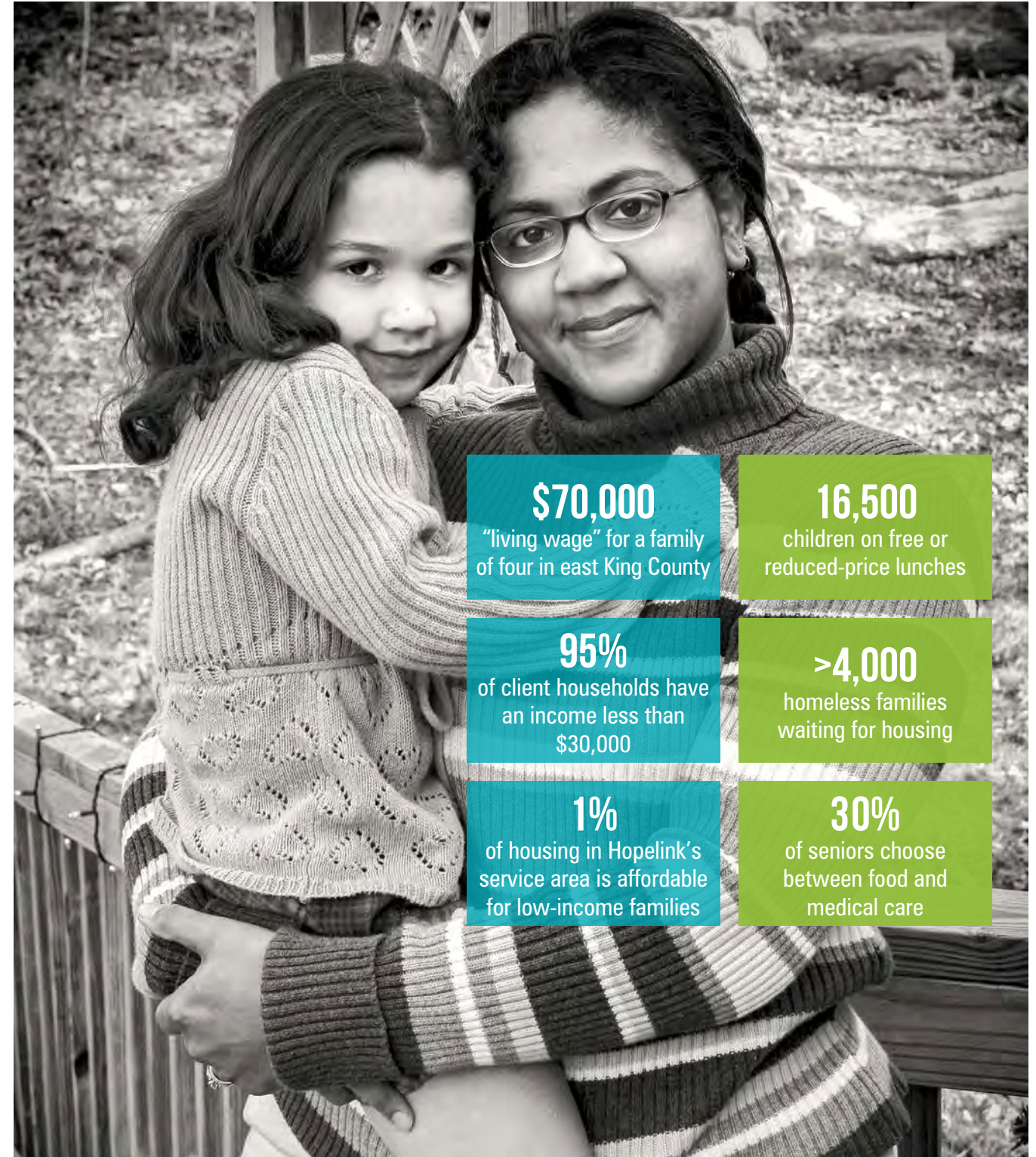
In north and east King County, 86,000 people, including an astonishing 16,500 children, live in poverty.

People are constantly facing the risk of a financial crisis, and the stress from this can be devastating to children, seniors, families and communities.

Poverty in our community is exacerbated by extremely high housing costs, limited access to transportation, and a lack of living-wage jobs.

The Effects of Poverty in Our Community

Recent studies show that children and seniors suffer the most from inadequate nutrition. It affects a child's ability to develop both physically and mentally and presents seniors with serious health issues, including difficulty recovering from illnesses. Reports indicate that 30 percent of households with seniors have to choose between food and medical care, and 35 percent have to choose between food and utilities.



\$70,000
"living wage" for a family of four in east King County

16,500
children on free or reduced-price lunches

95%
of client households have an income less than \$30,000

>4,000
homeless families waiting for housing

1%
of housing in Hopelink's service area is affordable for low-income families

30%
of seniors choose between food and medical care

WHY HOPELINK?

I never thought I'd need help—but I did—and Hopelink was there when I couldn't keep my kids warm in our home, we needed school supplies, my part-time job didn't provide enough food for my children, I had an idea for my future that would allow me to become self-sufficient. Today, I am there for Hopelink.

—CONNIE CHAPIN, FORMER HOPELINK CLIENT, BOARD MEMBER, AND SUPPORTER

Hopelink Makes a Difference

For more than 44 years, Hopelink has focused on reducing and eliminating poverty in our community. With support from community members, we have changed the lives of more than 1,000,000 people. Each year, more than 64,000 low-income children, adults, seniors and people with disabilities throughout north and east King County receive food assistance, housing, help with employment, transportation and other vital services.

Hopelink is Passionate

Hopelink is committed to serving the needs of everyone who comes to us for help. For some, especially low-income seniors and those with disabilities, help is needed every month with food or transportation to medical appointments. Others may need help in attaining their goals of higher education and a better paying job with advancement opportunities.

Hopelink is Efficient and Effective

With well over 90 percent of funding applied directly to programs and services, Hopelink ensures continued best practices in all it does. As a data-driven organization, with a culture of continuous improvement, we are widely recognized for our innovation and excellence.

Helping People. Changing Lives.



2,250,000
meals provided in
food assistance
programs annually

54%
of transitional housing
families achieved
permanent housing

82%
average increase
of monthly income for
clients in Hopelink's
Employment Program

Volunteers stocking Bellevue food bank



Hopelink English for Work class

I was so glad I found Hopelink. My kids and I stayed three months at the Kenmore shelter, then transitional housing, and eventually we found permanent housing. Through Hopelink we became stable. I got my undergraduate degree at the University of Washington, where I am now enrolled in graduate school. I also have a full-time job. — CHELSEA CARTER, HOPELINK CLIENT

Provide Tools and Skills to Exit Poverty

10,000 people equipped over 10 years

Building resiliency is a cornerstone of a family’s ability to avoid falling back into crisis when problems occur. We believe that every person who comes through our doors has the ability to progress toward their highest level of self-sufficiency.

Self-sufficiency looks different for each person we serve—for a young mother of two without a high school diploma, it may look like a GED, a job, a safe place to live, and quality childcare for her children. For a recent immigrant with limited English skills, it might mean learning the language skills they need to find employment and support their family.

Our case management approach, combined with the educational and training resources we offer, is time and labor intensive. In order to meet our goal of serving 10,000 people, Hopelink will double the number of Employment Specialists and Family Development Case Managers over the next 10 years.

Enhance Services

Hopelink owns two of our five service centers. This campaign will enable us to secure two additional centers, reducing rental costs and directing more funding to those in need. These larger centers will increase efficiency and accessibility, while providing familiar services such as food and emergency financial assistance.

The centers will enable us to incorporate our Family Development and Employment Program staff into center operations, ensuring our clients receive personalized case management and access to individualized services.

Hopelink service centers act as a place to build community. More than 3,000 volunteers come to Hopelink each year, providing more than 70,000 hours of service. They reach out to their neighbors in need, and teach their children the importance of giving back.

Built Ronald Commons

Shoreline Integrated Service Center

Completed February 2017

The city of Shoreline has the highest rate of poverty in our service area, with 28 percent of school-aged children qualifying for free and reduced-price lunches.

In collaboration with Compass Housing Alliance and Ronald United Methodist Church, we have built a new service center that will enable us to double our services. We have increased the number of families we serve from 3094 to 4,000.

Develop Redmond

Redmond Integrated Service Center

Completion expected 2018

Through an exciting partnership with the City of Redmond, Hopelink has secured a permanent home for our Redmond service center and administrative offices. Combining these two facilities will reduce rent and allow Hopelink to devote more money to serving the community.

Expand Food Program

Hopelink's extensive food assistance program is a critical component in creating stability for the people we serve—almost 15,000 each year. A family of four utilizing Hopelink's food bank receives the equivalent of \$400 of food per month, allowing them to use their already stretched dollars on other vital basic needs.

With this investment, our food assistance program can reach more people and better address the needs of everyone living in poverty in our community.



Through the Campaign
for Lasting Change

10,000

people will benefit from:

- employment
- education
- financial stability
- increased household incomes
- balanced household budgets

Take it from me, being a kid who doesn't know where your next meal is coming from, or where you are going to sleep at night is devastating. Hopelink provided us with a roof over our head, the services we needed to get back on our feet, and most importantly, they gave us hope. Today, I want to simply say thank you.

— JONATHAN DICKENSON, FORMER HOPELINK CLIENT, BOARD MEMBER, SUPPORTER

Housing

There is a need for affordable housing in a community with high housing costs. Hopelink provides a support network that gives stability to families, guides them toward permanent housing and allows them to focus on the steps needed to ensure a stable future.

Renovated Kenmore Shelter

11 units/1,000 families over 50 years

Completed July 2015

The only homeless family shelter in north King County required extensive renovations throughout to continue to offer a safe haven for homeless families. Campaign funding enabled us to renovate this shelter and increase the number of units to 11—providing a safe home for 1,000 families over the 50-year life of the facility.

Construct Redmond Transitional Housing

8 units /106 families over 50 years

Completion expected 2018

We will build 8 family units in Redmond that will give families stability as they move toward self-sufficiency.

Campaign for Lasting Change

Project	Completion Date	Cost
Self-Sufficiency Services <i>For 10,000 people</i>	<i>Next 10 years</i>	\$4,200,000
Integrated Service Centers <i>Shoreline</i> <i>Redmond</i>	<i>Completed</i> <i>2018</i>	\$4,000,000 \$9,000,000
Housing <i>11 Kenmore family shelter units</i> <i>8 Redmond family housing units</i>	<i>Completed</i> <i>2018</i>	\$2,250,000 \$2,000,000
Food Assistance Investments <i>System-wide</i>	<i>2018</i>	\$1,000,000
Planning and Contingencies	<i>Over 4 Years</i>	\$2,550,000
Total		\$25,000,000

You Can Help Transform Our Community

Our community is well educated, diverse, and generous; however, access to the many benefits that make this such a wonderful place to live is limited for families in poverty. You can make a difference.

Your investment in this campaign will transform the lives of low-income children, seniors, and families. By working together, we will make lasting change and make our neighborhoods better places to live for everyone. — LAUREN THOMAS, HOPELINK CEO



hopelink

Won't You Join Us?

For more information please contact:

Jeni Craswell, Director of Development

425.883.4504

jcraswell@hopelink.org

Diane Perry, Campaign Manager

425.869.7835

dperry@hopelink.org